

## Atlanta Public Schools Capacity Study and Facilities Plan

**SRT 2 Community Meeting:  
Monday, November 28, 2011  
South Atlanta High School**

## Tonight's Agenda

- **Consultant Presentation**
  - Provide an update on the Study process
  - Describe the rationale behind the Options presented
    - Demographic forces impacting enrollment
    - Key capacity issues impacting SRT 2
    - How to interpret the maps
- **Review the detailed maps and provide your input**
  - Ask questions of the consultant team
  - Provide your written comments on the forms provided
    - Rank and record your thoughts and observations related to the Options presented
    - Suggest refinements or additional considerations

## Study Status Update

# CAPACITY STUDY 2011

Study Process

**Phase I: Data Collection/Modeling**



**Phase II: Alternatives Analysis**



**Phase III: Implementation Strategies**



**Submit Report:** to the Superintendent  
and brief the School Board on findings



**Post Completion: Superintendent considers  
findings & makes recommendations to the School Board**

Tonight **begins**  
the process of  
vetting Options  
and developing  
“preferred”  
implementation  
strategies to  
present to the  
Superintendent  
of Schools

## Public Input Process to Date

- Focus group meetings with SRT representatives
  - Held October 16 to 20
  - Representative participation
  - Discussed strengths, weaknesses, opportunities & threats impacting local schools
  - Provided the consultant team with specific information regarding local school and neighborhood conditions, local issues and parental concerns
  - Discussed pros/cons of potential concepts to be evaluated

## Public Input Process (continued)

- On-line demographics survey
  - 4,250 responses received through November 23
  - Paper version added in October to broaden response rate
    - 600+ paper survey returns are now being processed
  - On line survey will remain active for another week
  - Results will be used to help narrow/refine range of options and possibly suggest additional concepts to be explored before making study recommendations
- Community meeting input
  - You will be given an opportunity to respond in writing to the Options presented tonight
  - Responses will be tabulated and reported in January with the study recommendations

## Focus Group Summary

- Schools are “centers” of several local neighborhoods
- Walk-able schools are a plus
- Consolidating schools could be supported IF
  - Average class sizes are reduced
  - More /better educational resources allocated to retained schools
  - More students attend the best facilities and best performing schools
- Test primary center concept ( K-2/3-5) where it makes sense

## Focus Group Summary

- Don't make parental involvement more difficult by drawing zones that are too large
- Avoid frequent redistricting – make changes that will last
- If possible, avoid splitting neighborhoods into multiple feeder zones
- Single gender academies and non-traditional schools are drawing students out of SRT 2 – don't make decisions which accelerate that process

## Remaining Study Process

- We will combine, analyze & report input from tonight's session the demographic survey & focus groups
- We will consider that input in narrowing options down to two recommended implementation strategies
  - Incorporate/refine the best elements of the 4 Options
  - Test additional scenarios for localized areas that may emerge from these meetings
- Calculate/report the financial implications of the two recommended strategies
- **Hold a second round of community meetings in January** before finalizing recommendations and reporting findings to the Superintendent

## Summary of Key Issues Impacting the Atlanta Public Schools and SRT 2

## Key variables impacting APS enrollment

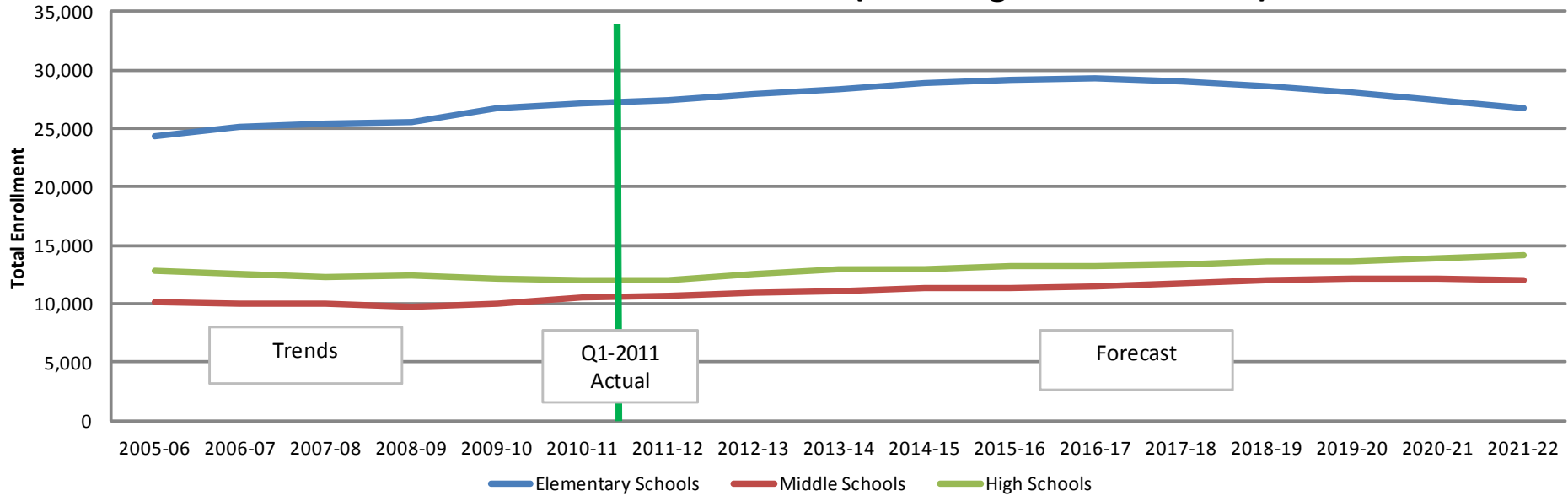
- Enrollment bubble started in the past decade will be moving through the middle & high school grades
- Substantially lower housing starts – greater influence of resale market turnover and households aging in place
- More renter households delaying home ownership and having school-aged children
- Less out-migration of families with school-aged children to suburban counties
- Higher retention of students progressing through high school (dropout/exit rates are declining)
- Access to private school alternatives will be limited by the economy and a finite supply of available seats

## Enrollment Forecast (continued)

- This revised forecast has been updated and extended from the previous 2010 estimates
- These updated forecasts:
  - Reflect 2010 Census data
  - Incorporate final first quarter FTE student attendance figures for all APS schools, including charters
  - Include revised student address data for students attending traditional APS schools, charter schools, private schools and home schooled
- Forecasts are extended to the 2021-22 school year
  - Provides 2 additional forecast years
- The revised enrollment forecasts are based on **existing** attendance zone boundaries

## District-wide enrollment forecast

APS Enrollment Trends & Forecasts (Including Charter Schools)

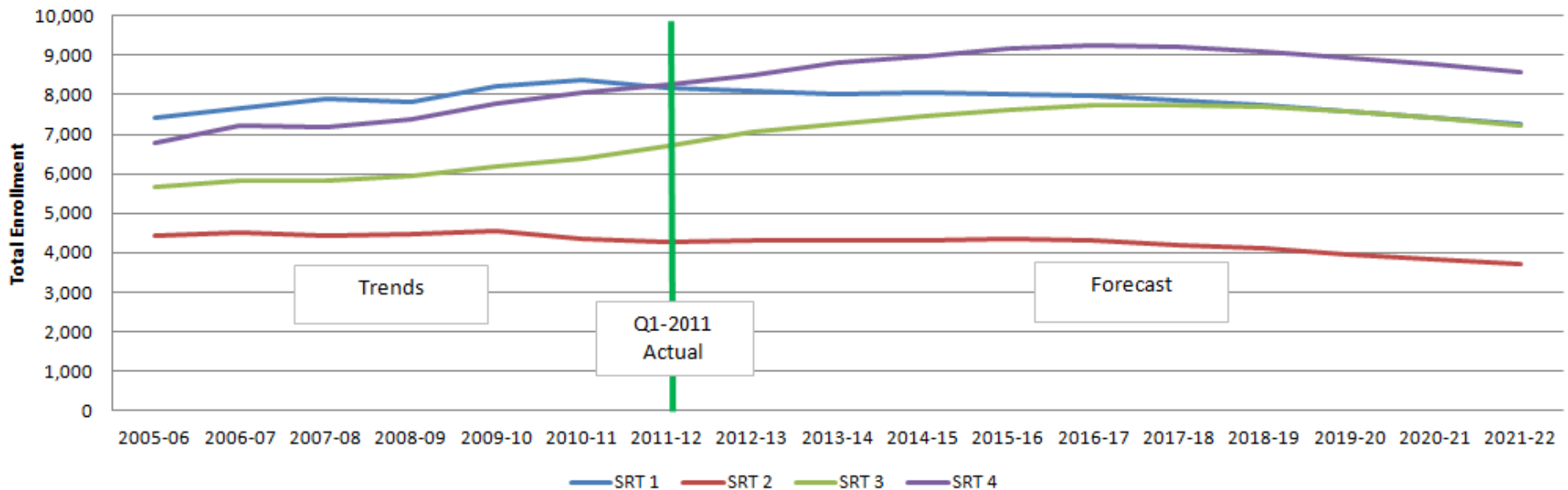


Forecast Summary	Elementary		Middle		High		TOTAL	
Current SRT Enrollment	27,424		10,610		11,957		49,991	
2005 - 11 Enrollment Change	3,127	12.9%	478	4.7%	(810)	-6.3%	2,795	5.9%
<b>Forecast Peak Enrollment</b>	<b>29,288</b>		<b>12,146</b>		<b>14,092</b>		<b>55,526</b>	
<b>Forecast Change: 2011 to Peak Year</b>	<b>1,864</b>	<b>6.8%</b>	<b>1,536</b>	<b>14.5%</b>	<b>2,135</b>	<b>17.9%</b>	<b>4,169</b>	<b>8.3%</b>
<b>Peak Enrollment Year</b>	<b>2016-17</b>		<b>2019-20</b>		<b>2021-22</b>		<b>2018-19</b>	
2021-22 Forecast Enrollment	26,765		11,989		14,092		52,846	
<b>Forecast Change: Current to 2021-22</b>	(659)	-2.4%	1,379	13.0%	2,135	17.9%	2,855	5.7%

## SRT Elementary School Enrollment Forecasts

(Updated to reflect 2010 Census Results)

### Elementary School Enrollment Trends & Forecasts by SRT (Including Charters)

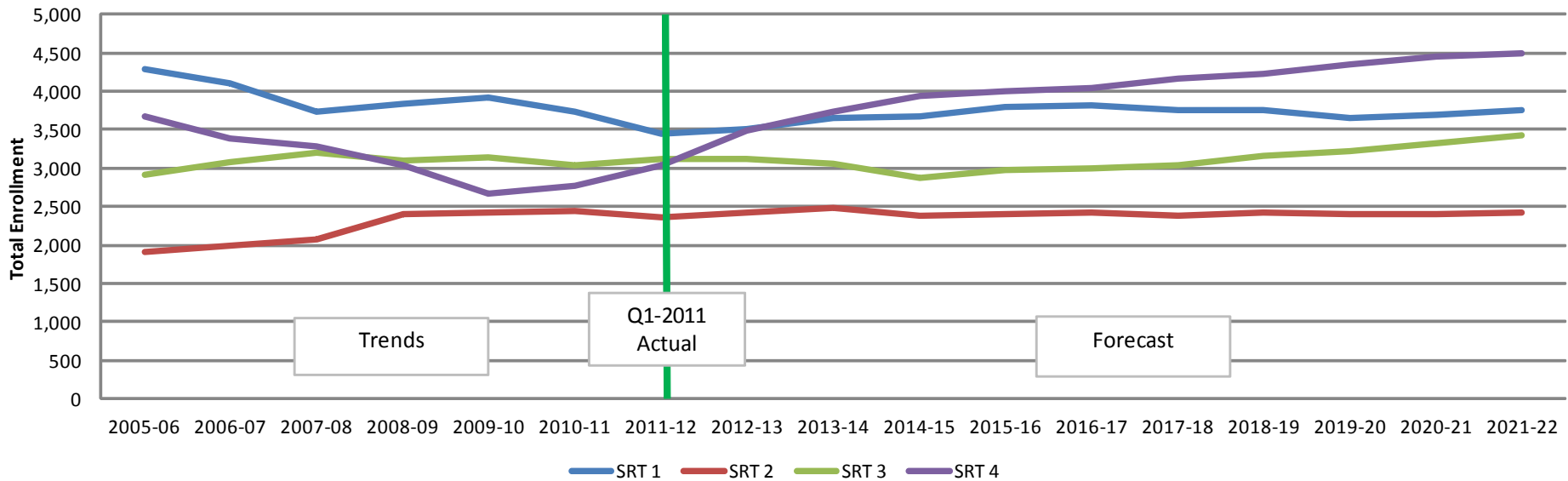


Forecast Summary	SRT 1		SRT 2		SRT 3		SRT 4	
Current SRT Enrollment	8,172		4,272		6,717		8,263	
2005 - 11 Enrollment Change	739	9.9%	(149)	-3.4%	1,058	18.7%	1,479	21.8%
Forecast Peak Enrollment	8,172		4,338		7,742		9,248	
Forecast Change: 2011 to Peak Year	-	0.0%	66	1.5%	1,025	15.3%	985	11.9%
Peak Enrollment Year	2011-12		2015-16		2017-18		2016-17	
2021-22 Forecast Enrollment	7,251		3,708		7,236		8,570	
Forecast Change: Current to 2021-22	(921)	-11.3%	(564)	-13.2%	519	7.7%	307	3.7%

## SRT Middle School Enrollment Forecasts

(Updated to reflect 2010 Census Results)

### Middle School Enrollment Trends & Forecasts by SRT (Including Charter Schools)



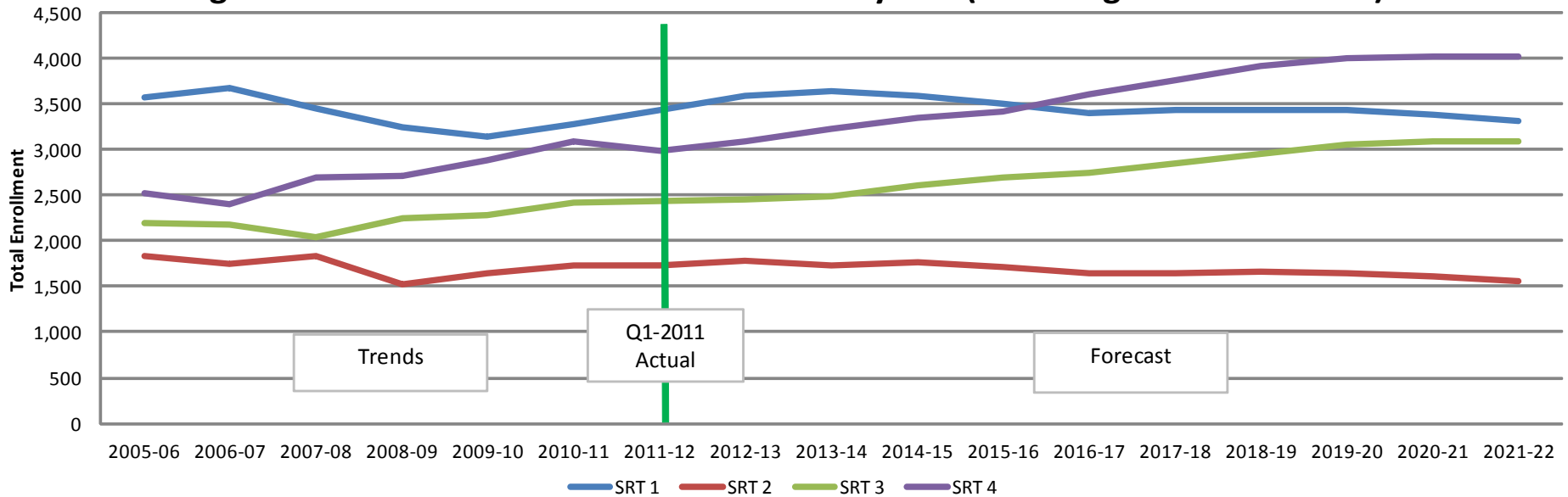
Forecast Summary	SRT 1		SRT 2		SRT 3		SRT 4	
Current SRT Enrollment	3,435		1,737		2,444		2,994	
2005 - 11 Enrollment Change	(139)	-3.9%	(93)	-5.1%	240	10.9%	470	18.6%
<b>Forecast Peak Enrollment</b>	<b>3,638</b>		<b>1,778</b>		<b>3,094</b>		<b>4,023</b>	
<b>Forecast Change: 2011 to Peak Year</b>	<b>203</b>	<b>5.9%</b>	<b>41</b>	<b>2.4%</b>	<b>650</b>	<b>26.6%</b>	<b>1,029</b>	<b>34.4%</b>
<b>Peak Enrollment Year</b>	<b>2013-14</b>		<b>2012-13</b>		<b>2021-22</b>		<b>2020-21</b>	
2021-22 Forecast Enrollment	3,322		1,555		3,094		4,018	
<b>Forecast Change: Current to 2021-22</b>	<b>(113)</b>	<b>-3.3%</b>	<b>(182)</b>	<b>-10.5%</b>	<b>650</b>	<b>26.6%</b>	<b>1,024</b>	<b>34.2%</b>

# CAPACITY STUDY 2011

## SRT High School Enrollment Forecasts

(Updated to reflect 2010 Census Results)

### High School Enrollment Trends & Forecasts by SRT (Including Charter Schools)



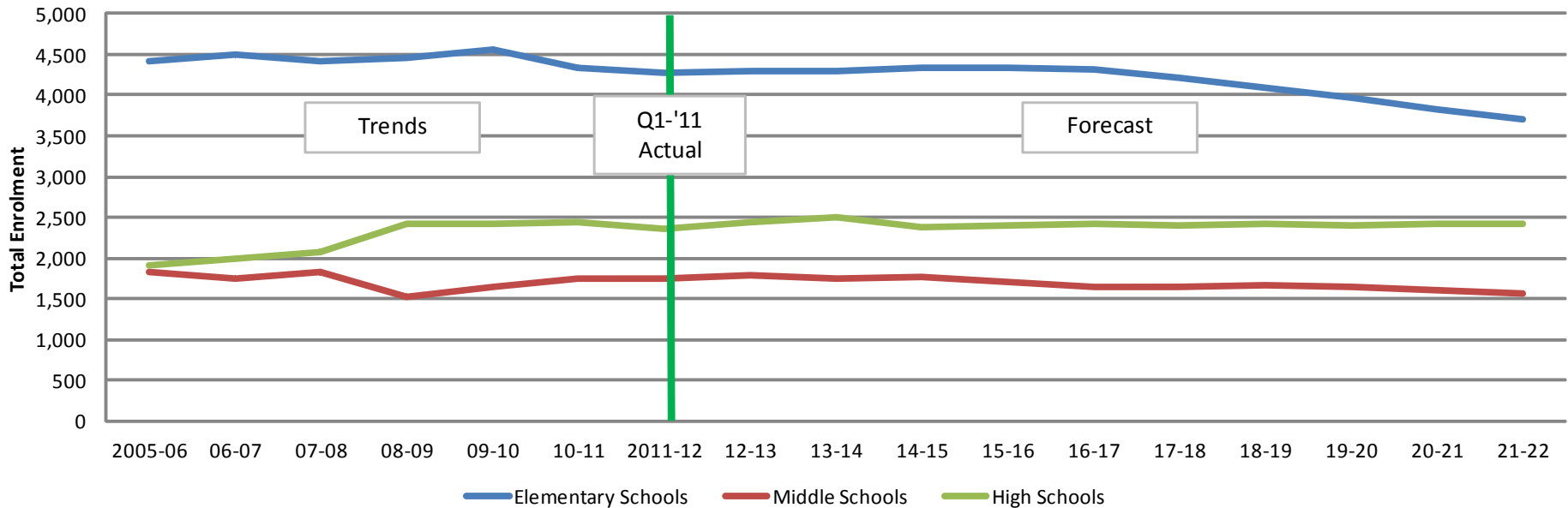
Forecast Summary	SRT 1		SRT 2		SRT 3		SRT 4	
Current SRT Enrollment	3,457		2,361		3,110		3,029	
2005 - 11 Enrollment Change	(831)	-19.4%	458	24.1%	204	7.0%	(641)	-17.5%
<b>Forecast Peak Enrollment</b>	<b>3,807</b>		<b>2,493</b>		<b>3,421</b>		<b>4,497</b>	
<b>Forecast Change: 2011 to Peak Year</b>	<b>350</b>	<b>10.1%</b>	<b>132</b>	<b>5.6%</b>	<b>311</b>	<b>10.0%</b>	<b>1,468</b>	<b>48.5%</b>
<b>Peak Enrollment Year</b>	<b>2016-17</b>		<b>2013-14</b>		<b>2021-22</b>		<b>2021-22</b>	
2021-22 Forecast Enrollment	3,748		2,426		3,421		4,497	
<b>Forecast Change: Current to 2021-22</b>	<b>291</b>	<b>8.4%</b>	<b>65</b>	<b>2.8%</b>	<b>311</b>	<b>10.0%</b>	<b>1,468</b>	<b>48.5%</b>

# CAPACITY STUDY 2011

## SRT 2 Enrollment Forecasts

(Updated to reflect 2010 Census Results)

### SRT 2 Enrollment Trends and Forecasts (Including Charter Schools)



Elem. & middle schools lose enrollment after mid-decade.

Forecast Summary	Elementary Schools		Middle Schools		High Schools	
Current SRT 2 Enrollment	4,272		1,737		2,361	
2005 - 11 Enrollment Change	(149)	-3.4%	(93)	-5.1%	458	24.1%
<b>Forecast Peak Enrollment</b>	<b>4,338</b>		<b>1,778</b>		<b>2,493</b>	
<b>Forecast Increase: 2011 to Peak Year</b>	<b>66</b>	<b>1.5%</b>	<b>41</b>	<b>2.4%</b>	<b>132</b>	<b>5.6%</b>
<b>Peak Enrollment Year</b>	<b>2015-16</b>		<b>2012-13</b>		<b>2013-14</b>	
Forecast 2021-22 Enrollment	3,708		(564)		2,426	
Forecast Increase: Current to 2021-22	(564)	-13.2%	(182)	-10.5%	65	2.8%

HS enrollment remains stable through the forecast.

## Key SRT 2 Challenges

- The area has substantial existing excess capacity at the elementary grade levels
- Elementary enrollment should stabilize over the next five years, followed by a gradual decline
- Middle and High schools remain relatively stable throughout the forecast
- Process of public housing demolition is ending
- The locations of school facilities in the area are out of balance with the distribution of where students live

## Specific School Impacts

If no action is taken....

Eight elementary and one middle school are projected to remain below 60% utilization over the term of the forecast.

Five schools are projected to remain below 400 total enrollment.

Forecast Peak School Crowding Conditions (>95% of Design Capacity)	Current 2011-12 Enrollment	Peak Forecast Enrollment	Planning Capacity	Peak Enrollment Change	Projected Peak Utilization
Dunbar	385	468	440	83	106%

Forecasted Severe School Underutilization (<60% of Design Capacity)	Current 2011-12 Enrollment	Peak Forecast Enrollment	Planning Capacity	2011-22 Enrollment Change	Projected 2021 Utilization
Benteen	187	188	528	1	23%
D H Stanton	265	324	726	59	39%
Cleveland	327	330	594	3	40%
Capitol View	231	213	374	(18)	47%
Humphries	359	364	572	5	51%
Price MS	594	577	858	(17)	52%
Hutchinson	417	444	726	27	53%
Heritage Academy	468	495	748	27	56%
Dobbs	576	577	792	1	59%

## Options Analysis Process and Mapping Outputs

# Options Analysis Guidelines

- Objectives
  - Balance current building utilization to 80% to 90% of planning capacity where possible
    - Recommend school consolidation/closures in areas where forecasted enrollment does not support multiple schools
    - Provide added capacity for growth in zones which are projected to experience further enrollment increases
    - Propose boundaries that will be functional for 10 years if possible
  - Attempt to assign students closest to their homes
  - Attempt to avoid splitting neighborhoods
  - Insure student safety and transportation efficiency by using major geographic features as boundaries
  - Attempt to maximize/keep feeder concept in tact

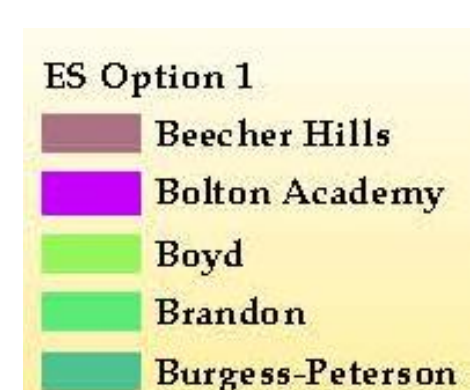
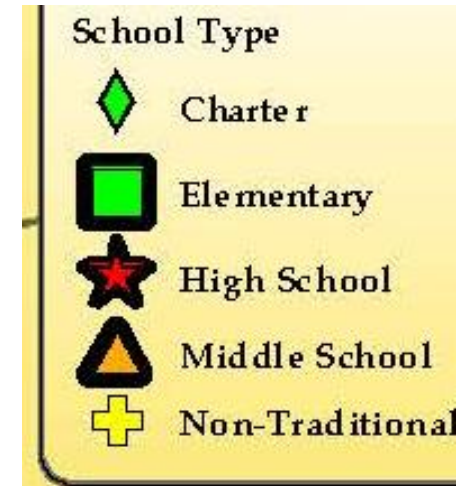
## Concepts Explored to Provide Capacity Relief

- Redistricting and consolidation
- New construction based on SPLOST planning
- Grade Center concept similar to SRT 4 ES
- Consider the implications of long-term demographic changes
- Planning based on resident APS population with the assumption that some level of transfer activity will continue

**The planning guidelines established for this process  
limit the array of workable solutions**

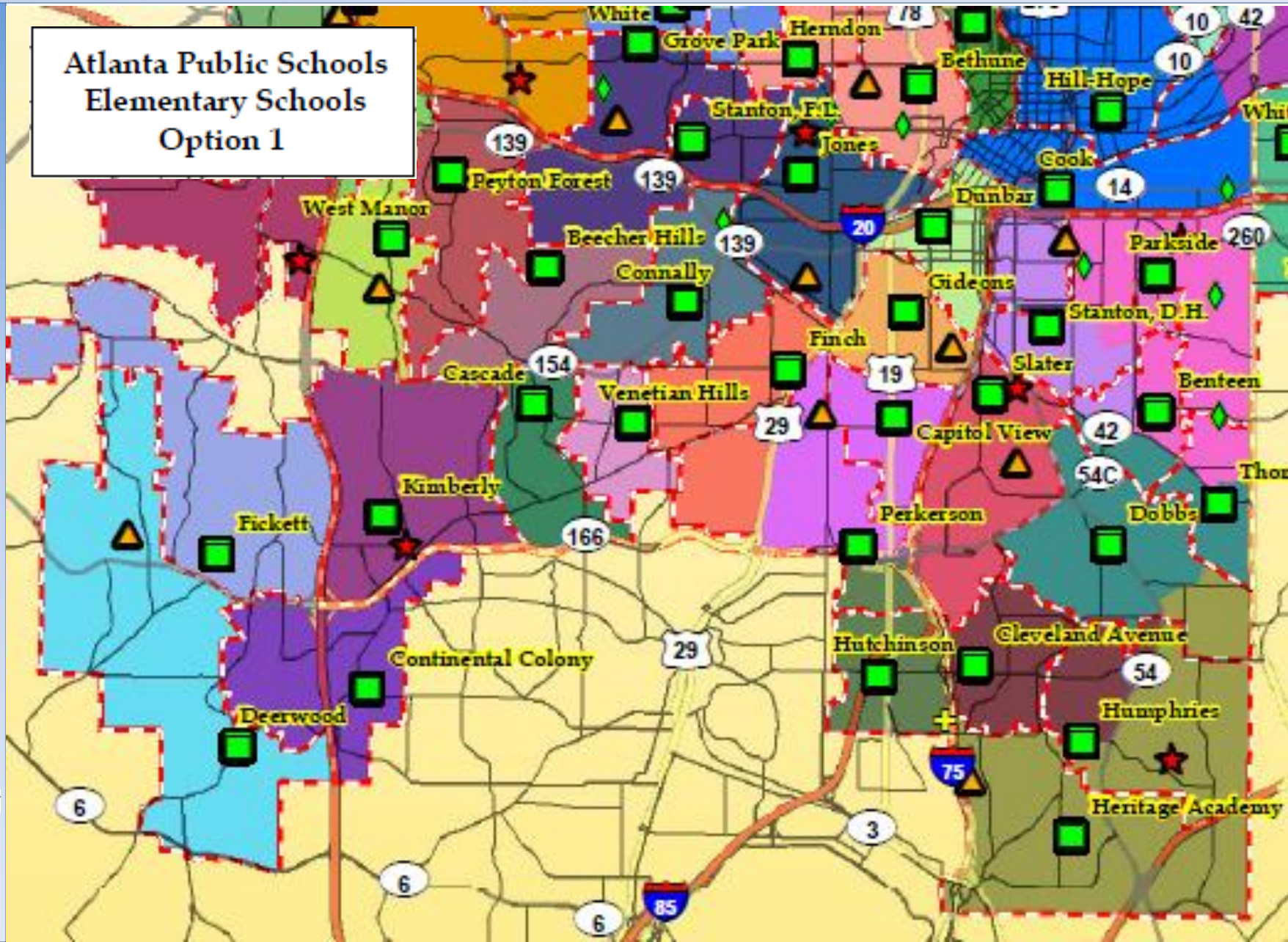
## How to Interpret Maps of DRAFT Options

- Schools are symbolized based on ES, MS, and HS
  - Elementary Schools are green squares
  - Middle Schools are orange triangles
  - High Schools are red stars
- **Current** school attendance zones are shown as a red/white dashed outline
- The proposed Option zones are shown as the colored zones
  - Attendance zone **changes** are indicated when the red/white dashed lines do not follow the colored backgrounds



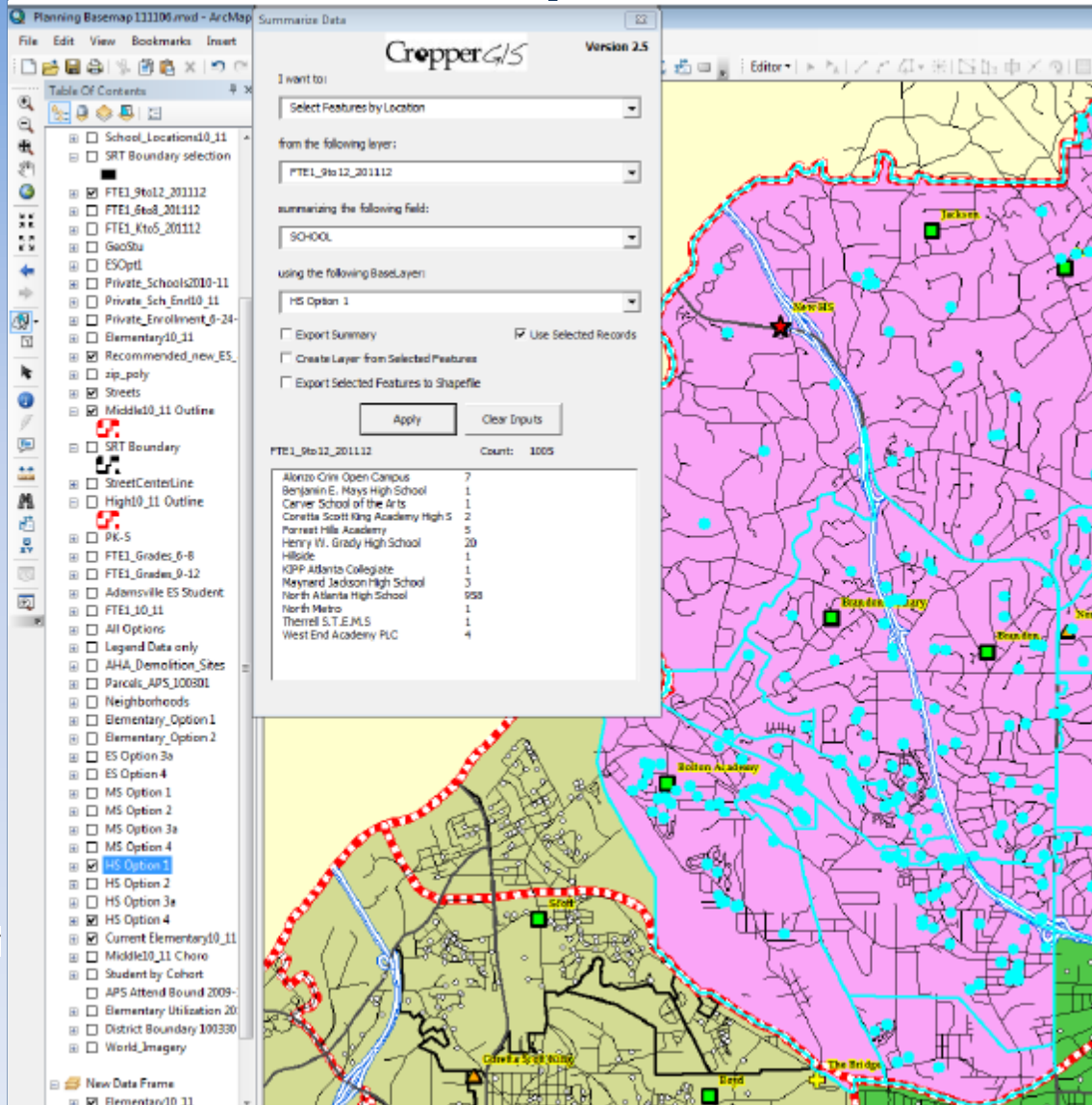
# CAPACITY STUDY 2011

## Atlanta Public Schools Elementary Schools Option 1



Snapshot: SRT 2 - Option 1

## GIS Analysis Tools

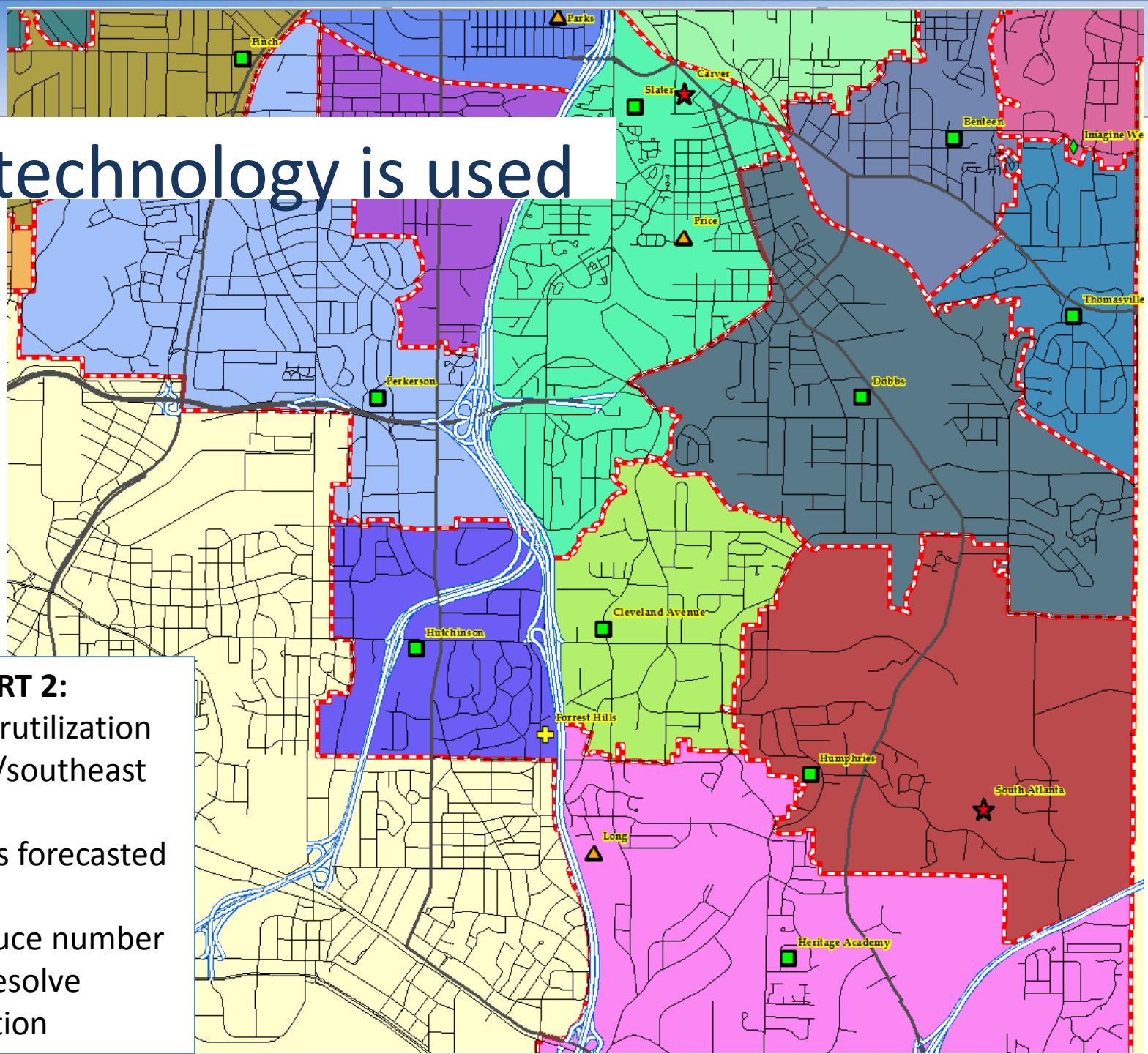


GIS tools and address level data provide **current** school attendance distributions for APS students at any level of geography. With this capability we can:

- Count all students living within a particular geography, identify the schools they attend and the numbers involved
- Estimate the number of current APS students that would be affected by a particular boundary adjustment
- Quickly test multiple options and rule out those that don't work

# How technology is used

ons Analysis



## Case Study – SRT 2:

- Severe underutilization in the south/southeast of the SRT.
- Enrollment is forecasted to be stable
- Need to reduce number of seats to resolve underutilization

## Case Study – SRT 2:

- Starting point is count students living in the zones currently
- 1,191 students living in Cleveland, Humphries, and Heritage zones combined vs. 1.914 seats (62% utilization)

**CropperGIS** Version 2.5

I want to:

Select Features by Location

from the following layer:

FTE1\_Kto5\_201112

summarizing the following field:

SCHOOL

using the following BaseLayer:

Current Elementary10\_11

Export Summary  Use Selected Records

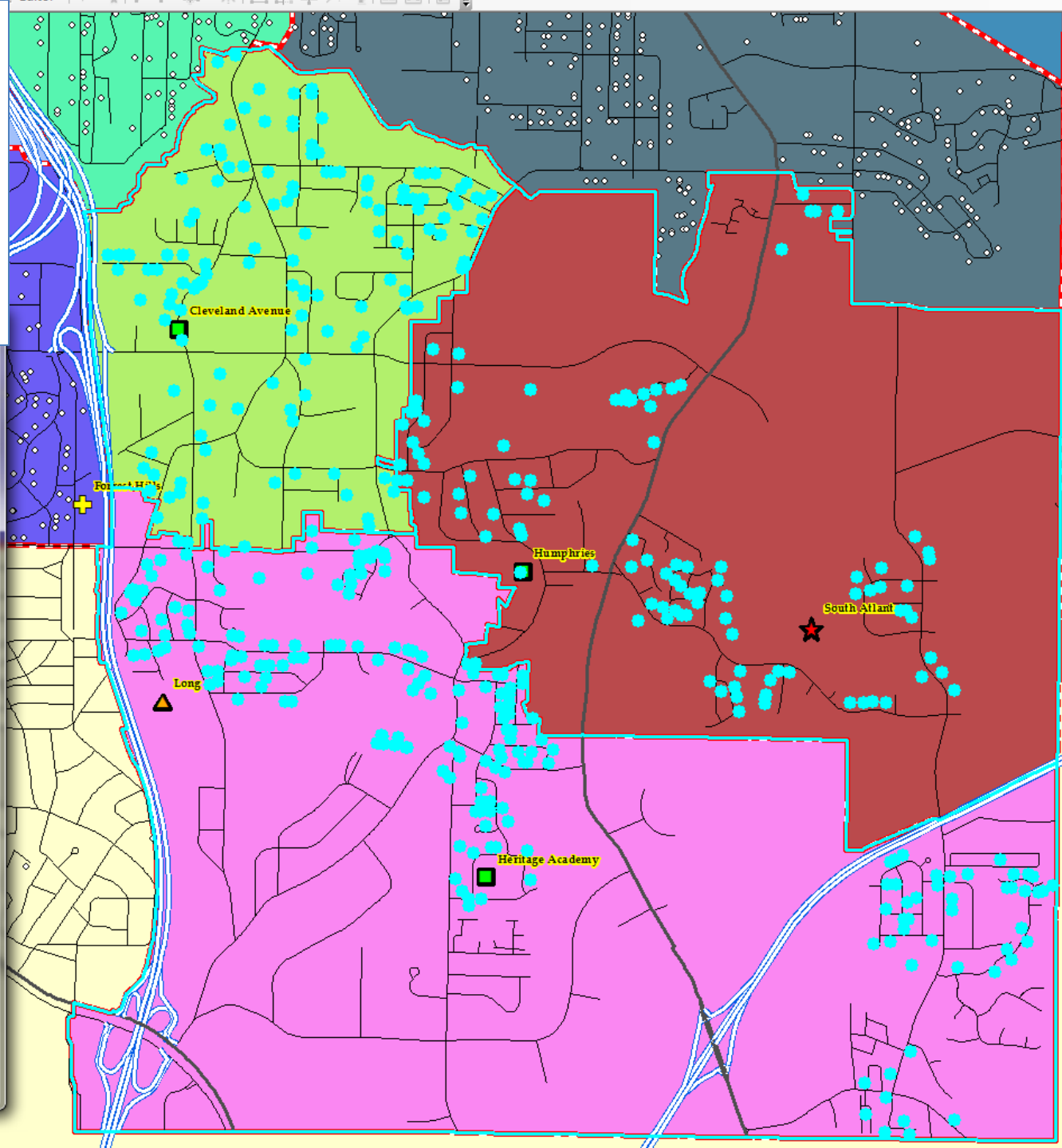
Create Layer from Selected Features

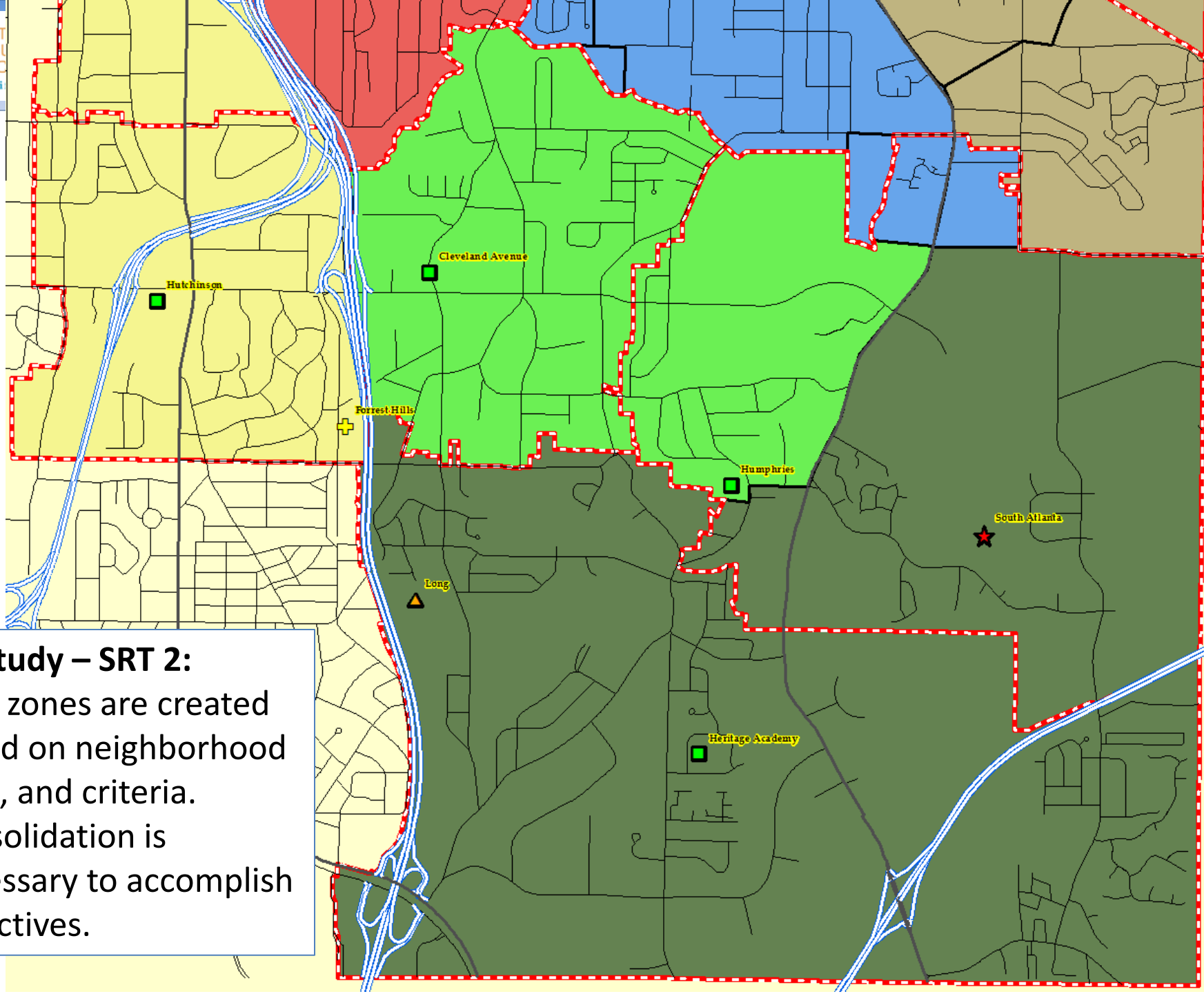
Export Selected Features to Shapefile

Apply Clear Inputs

FTE1\_Kto5\_201112 Count: 1191

Atlanta Preparatory Academy	12
Beecher Hills Elementary Sch	6
Benteen Elementary Sch	1
Burgess-Peterson Elementary Sch	3
Capitol View Elementary Sch	3
Centennial Place Elementary Sch	1
Charles L. Gideons Elementary Sch	4
Charles R. Drew Charter School	15
Cleveland Avenue Elementary Sch	251
Daniel H. Stanton Elementary Sch	5
Deerwood Academy	1
East Lake Elementary Sch	1
Ed S. Cook Elementary Sch	2
Emma Hutchinson Elementary Sch	19
F. L. Stanton Elementary Sch	2
Fickett Elementary Sch	1





## Case Study – SRT 2:

- New zones are created based on neighborhood lines, and criteria.
- Consolidation is necessary to accomplish objectives.

## DRAFT Options Maps (continued)

- Keeping the feeder concept in mind, the options have been developed as groups.
  - For instance, Elementary, Middle, and High School Option 1 are all related.
  - Options are organized by HS feeder groups
- We will be available at the maps to help assist in explaining the options

**Atlanta Public Schools 2011 Capacity / Utilization Study**  
**Summary Matrix of Planning Assumptions and Recommendations by Option**

		<u>Option 1</u>	<u>Option 2</u>	<u>Option 3</u>	<u>Option 4</u>
<b><u>Elementary School Closure Options</u></b>					
<b>SRT 1</b>	<b>Adamsville</b>	X		X	X
	<b>Beecher Hills</b>			X	X
	<b>Bethune</b>	X	X		
	<b>Boyd</b>		X		
	<b>Fain</b>		X		
	<b>Kimberly</b>		X		
	<b>Herndon</b>			X	X
<b>SRT 2</b>	<b>Benteen</b>	X	X	X	X
	<b>Capitol View</b>	X	X	X	X
	<b>Humphries</b>	X	X	X	X
	<b>Thomasville</b>	X	X		
<b>SRT 3</b>	<b>Burgess-Peterson</b>	X			
	<b>Cook</b>	X			
	<b>East Lake</b>	X	X	X	X
	<b>Whitefoord</b>		X	X	
<b>SRT 4</b>	<b>FL Stanton</b>	X	X	X	X
	<b>Towns</b>			X	X
	<b>White</b>		X	X	X
	<b>Woodson</b>	X			

# CAPACITY STUDY 2011

## Atlanta Public Schools 2011 Capacity / Utilization Study

### Summary Matrix of Planning Assumptions and Recommendations by Option

		<u>Option 1</u>	<u>Option 2</u>	<u>Option 3</u>	<u>Option 4</u>
<b><u>Elementary Primary/Secondary School Options</u></b>					
SRT 1	Adamsville / Miles		X		
SRT 2	None Proposed				
SRT 3	Burgess - Peterson / Toomer		X		
	Mary Lin / Hope		X		
	Mary Lin / Toomer				X
	Parkside / Cook		X		
	Hope / Springdale Park			X	X
SRT 4	Grove Park / Woodson		X	X	X
<b><u>Options for Existing Middle Schools</u></b>					
SRT 1	Feeder Pattern Adjustments Only				
SRT 2	Close Parks Middle School			X	X
SRT 3	Close ML King MS	X	X		
SRT 4	Move Sutton MS to the Existing North Atlanta HS	X	X	X	X
<b><u>Options for Existing High Schools</u></b>					
SRT 1	Feeder Pattern Adjustments Only				
SRT 2	Feeder Pattern Adjustments Only				
SRT 3	Feeder Pattern Adjustments Only				
SRT 4	Use Sutton MS as a North Atlanta HS 9 <sup>th</sup> Grade Center	X	X	X	X

## Please focus on the big picture...

- The Study objective is to provide long-term solutions for **all** APS students, not just a few particular schools
  - Alternatives evaluated for one school also impact surrounding schools
- These options are still **drafts**
  - It is likely that one or more hybrids which combine the positive elements of the Options presented tonight, will emerge as study recommendations
- Taking no action would also have negative financial & educational consequences to the School District
  - Failing to address over-crowded and under-enrolled schools could be even **more** harmful to students in the long run

## Constructive Feedback is Key!

- The purpose of these community meetings is to gather constructive input on the options presented
  - The most helpful information you can provide is in the details. For instance, identify roads or areas that you recommend changed rather than being opposed a particular attendance zone
  - The Options are complicated and take time to understand
- It is important for us to receive accurate, measurable feedback. We are giving everyone the opportunity to provide written comments that we will analyze.
  - It is not possible to measure the opinion of everyone in the room from verbal comments in an open Q&A format

## Tonight's Input Process

- Now is your opportunity to review the wall maps and fill out a comment form
- Copies of the updated enrollment forecasts, maps, tonight's presentation and the comment form will be posted on the APS website no later than Monday of next week
- Three ways to record your feedback and comments
  - Fill out and turn in the form tonight
  - Mail back the paper version to the address on the form by the indicated deadline
  - Fill out the on line version

# Thank you for participating

To correspond with APS about this study via e-mail, please send your comments to:  
[apsdemographicstudy@atlantapublicschools.us](mailto:apsdemographicstudy@atlantapublicschools.us)